

Quick Start Guide *For Macintosh*

Click'N Design 3d™

**Create and Print Amazing CD Labels
on your Desktop!**



Please record responsibly! Before copying anything onto a CD-R or CD-RW disc, please be sure you have rights to do so and are not violating copyright laws.

© 2001 Stomp Inc. All rights reserved. Reproduction in whole or part without prior written approval from Stomp is expressly prohibited. The Click'N Design 3d software is protected by copyright law and international treaties. Unauthorized reproduction or distribution of this program, or any portion of it, may result in severe civil and criminal penalties.

Macintosh, Apple, OS X are trademarks of Apple Corporation.
All other trademarks are the property of their respective owners.

Questions or comments? Please let us know!

Stomp, Inc. • 1000 Brioso Drive • Costa Mesa, CA 92627 • www.stompinc.com



Simply Amazing CD Label Making Software

Click'N Design 3d

Table of Contents

Welcome to Click'N Design 3d	3
Highlights of Click'N Design 3d	3
Minimum System Requirements	3
Installing Click'N Design 3d.....	4
Creating a CD Label	4-7
Creating a Jewel Case Label	7-10
How the Image Tools Work	10-13
How the Text Tools Work	13-16
How the Display Tools Work	17-19
Technical Support Information	20



Welcome to Click'N Design 3d

Click'N Design 3d gives you the tools to create professional-looking, high quality CD/DVD and jewel case labels for personal or professional use. Click'N Design 3d also provides background, clipart and texture images you can use to create your labels in addition to your own images and graphics.

Highlights of Click'N Design 3d

- Easy to use interface.
- Quick Design wizard that lets you create high quality labels in minutes.
- WYSIWYG editing. See what the end result will be on the screen.
- Create labels for CD, DVD, Jewel Case, Mini CD, Zip, 3.5" Floppy and Video tapes.
- Easily create circular text around the edge of your CD label.
- Browser for viewing the thousands of free clipart and photo images.
- Add barcodes to your labels.
- Add 3D text to your labels.
- Includes special effect filters you can apply to your photos.
- Support for drag-n-drop.

Minimum Windows System Requirements

- Power PC or greater Macintosh
- OS 8.6, OS 9 or OS X
- 32MB RAM (64MB recommended).
- 30MB free hard disk space (Up to 320MB if clipart content is included).
- 16 bit color, 800 x 600 or better.
- Mouse or other pointing device.

Installing Click'N Design 3d

1. Make sure no other applications are running.
2. Insert the Click'N Design 3d CD-ROM in your computer's CD-ROM drive
If the Click'N Design 3d Mac CD-ROM window does not open automatically, double-click the CD-ROM icon to open the window.
3. Double-click on the Click'N Design 3d Mac Installer file icon.
4. Follow the on-screen instructions.

Starting Click'N Design 3d



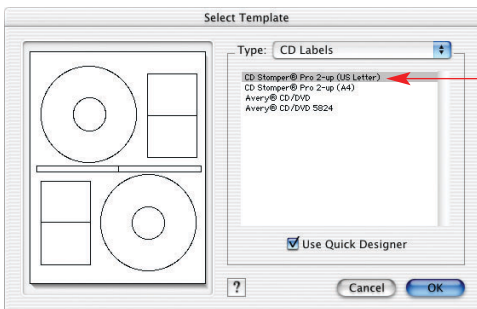
Locate the Click'N Design 3d program folder and double click on the Click'N Design 3d program icon to launch.

Creating a CD Label

This Quick Start Tutorial will take you step-by-step through the process of creating and printing a CD and Jewel Case label for your CD project. Please start Click'N Design 3d and begin here:

STEP 1:

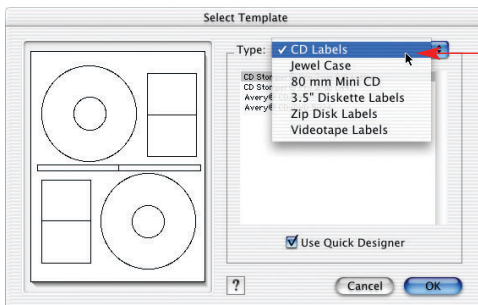
Click'N Design 3d supports CD, Jewel Case, Mini CD, Business Card CD, 3.5" Floppy Disk, Zip Disk, Video Tape and full sheet labels from many popular label makers.



Select the template of the label you will be printing to.

Click **OK** to continue

TIP: To change to a different label type, click on the "Type:" dropdown list box at the top of the dialog:



Click here to view the different types of labels available.

STEP 2:

The Quick Designer quickly allows you to create a template that contains much of the information you need including titles, content text and descriptions. As you change elements of a layout you can view your changes in the preview area to the left. When you're satisfied with the look of your label, click OK to open up your layout on the label template.



1. Browse the different templates using the Layout Controls.

2. Change any template by selecting your own Backgrounds, Color Schemes and Fonts.

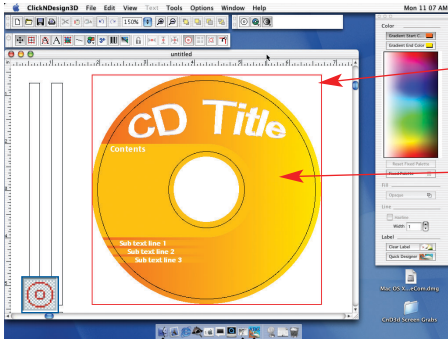
3. When you're happy with the results, click the OK button.

Use the  button to browse through all the different selections.

TIP: To return to this dialog from within the Click'N Design 3d program, use the Quick Design button located on the color palette control area: 


STEP 3:

Editing your label:



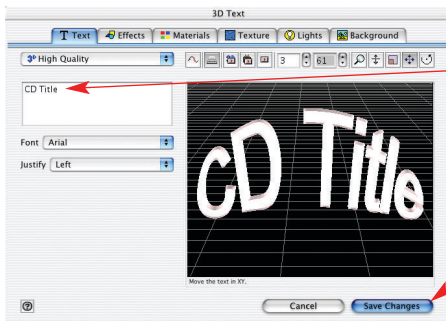
The red border means that this label is "active". Click on any other label to make it active.

With your mouse, double click on the 3D text "CD Title" to launch the editor.

TIP: Want to see the entire label, beyond the curve? Click on the  button located on the toolbar at the top of the screen.

STEP 4:

The 3D Text tool allows you to create dynamic titles for your labels:



1. In the text box, change the text from "CD Title" to "Photos".

2. When finished, click the Save Changes button to return to your template.

For more information on creating 3D Text, visit page 15.

STEP 5:

Selecting and moving an object around:



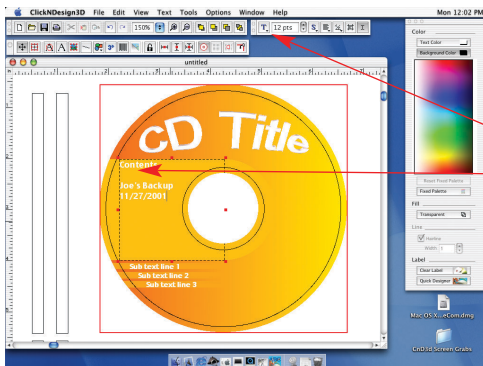
1. Clicking on an object once selects it. You will see eight control handles surround the selected object.

2. By clicking on a red control handle and dragging it left or right (while holding down the mouse button), you can resize your object.

3. By clicking and dragging anywhere inside the control handles, you can move the object.

STEP 6:

Adding/modifying text on your label:



Double clicking on a text box results in two actions:

1. Allows you to modify text.

2. Displays the **Text Toolbar** allowing you to fine tune how your text is displayed.

Overview of Text Toolbar:

(From left to right):



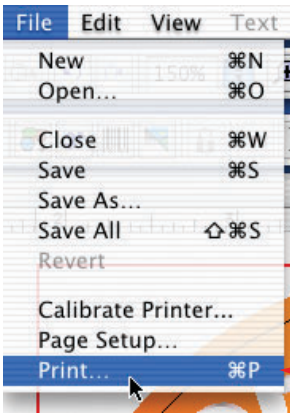
1. The "T" button allows you to select the font you want to apply to the highlighted text.
2. The "12 pts" and up/down arrow allow you to change the font size of the highlighted text.
3. The "S" button allows you to specify the font style to either Normal, Bold, Italic, Underline, Condense or Extend.
4. The justification button allows you change to left, right, center or full justified text.
5. The Orientation button rotates the text 90 degrees left or right or you can specify a specific rotation degree (useful for creating text on a jewel case spine).
6. The Margin button allows you to adjust the margins.
7. The Text button switches between object mode (where you can move the entire text box) and text mode (where you can edit the text inside the text box).

TIP: One text box can contain text with multiple fonts, colors and sizes. Highlight the text inside the text box you want to change and use the Text Toolbar to modify it.

To add photos and other objects to your label, please see page 9.

STEP 7:

Printing your label:



Now that your label is ready to print, click on the **File** pulldown menu and click **Print**


IMPORTANT NOTE ABOUT PRINTING:

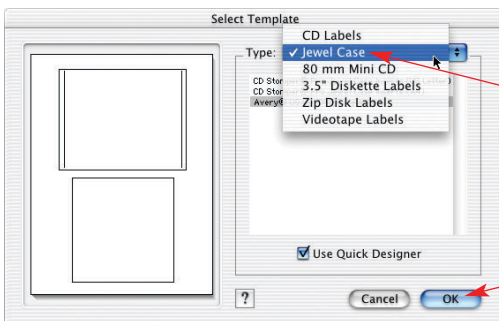
When printing labels, alignment is very important. It is strongly suggested that you use the **Calibrate Printer** selection under the **File** pulldown menu before printing. This will help Click'N Design 3d center your prints to the label sheets you are using and can be used any time your prints seem off center.

Congratulations! You're now ready to apply your label to your media.

Creating a Jewel Case Label

STEP 1:

To open a Jewel Case Label template from within Click'N Design, use the main toolbar, click on the "New" button  and you'll see the following dialog box:

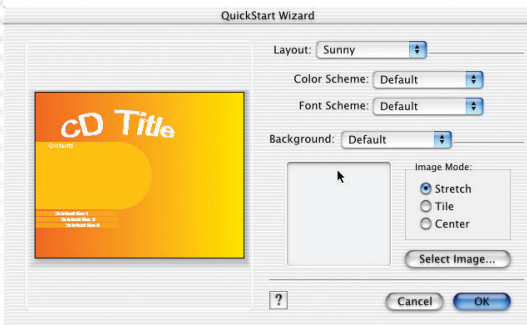


1. Scroll down until you see the **Jewel Case** section, select your label.

2. Hit the **OK** button.

STEP 2:

Use the QuickStart Wizard the same way you did when creating your CD label and when you are ready, click on the OK button to transfer the layout to the label.




TIP: Once the new template opens up, you may notice that your CD label has disappeared. It has not, it is in the background. To bring it to the front:



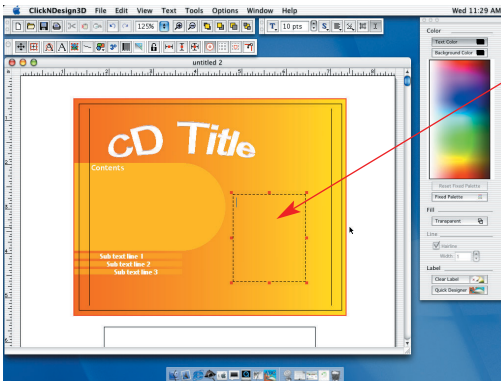
Click on the Window pulldown menu and select your CD label (it is the one that is not checked)

STEP 3:


The back of the Jewel Case has 2 spines on the left and right of the label that is used for identifying a CD when it is on a shelf. To add and rotate text for this area, please follow these steps:

After creating a new Jewel Case template, click on the text tool button  located at the top of the screen on the toolbar.

Click inside the label area and drag until you have a box outlined:

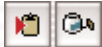


When you have defined your text box, begin typing in your text

Once your text is typed in, use the Orientation button  from the text toolbar and select "Up".

Your text will change from horizontal to vertical. Using your mouse drag and resize the text box until it is in the spine area:

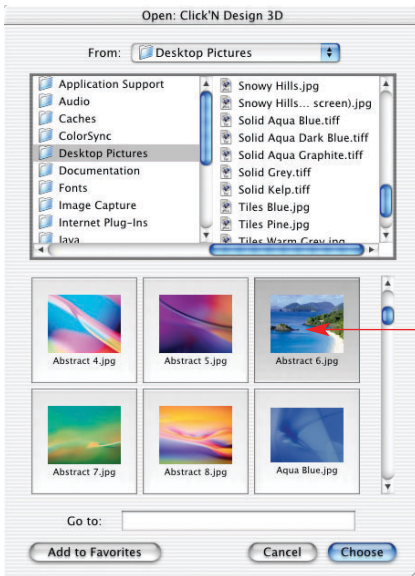


Once in position, use *cut & paste* tools on the toolbar  to create text for the other side.

STEP 4:

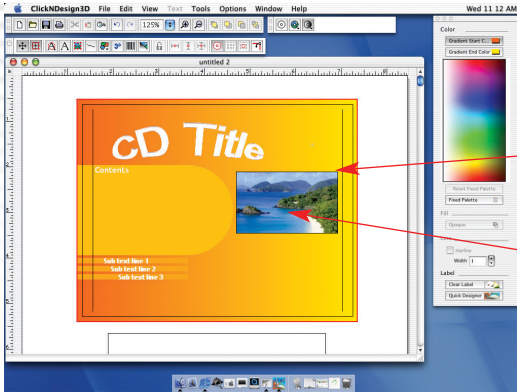
Finally, let's add an image to the front of our label.

From the toolbar, click on the Import Clipart/Image button . The image browser will open and you will see all the available clipart that is part of Click'N Design 3d:



Double click on this image to add it to your label.

The image will be placed inside the label:



Use the red control handles to resize and position the image.

TIP: Right click on the image and select **Effects**. You can add many special effects, enhancing your image

TIP: If you want to bring text forward so that it appears over the image, use the Order tools located on the toolbar



Congratulations! You're now ready to print your Jewel Case label using the same method you used when you printed your CD label.

Did You Know...??

Tips and tricks to unlock the full power of Click'N Design 3d.

How the Image Tools work:

Besides including over 5,000 clipart images, Click'N Design 3d has powerful imaging tools that allow you to use your own photos and graphics on your labels.

Tip 1: Did you know that Click'N Design 3d supports Drag-n-Drop?

Do you have a directory full of artwork or have a bitmap of your company logo? With Click'N Design 3d open, you can drag your graphics file from Mac file folders directly into Click'N Design 3d. To Drag-n-Drop you click on a file with your mouse and while holding down the left mouse button (the same button you used to click on the file) move the cursor over the Click'N Design 3D open template and release the mouse button. The file should now appear in your template!

Note: By using the Clipart/Background icon located on the **Tools** toolbar, you can determine if the dragged image will become clipart (which is moveable) or a background image (which is fixed).



= Image will be treated as clipart (*movable and sizable*)



= Image will be treated as a background image (*fixed, always in background*)

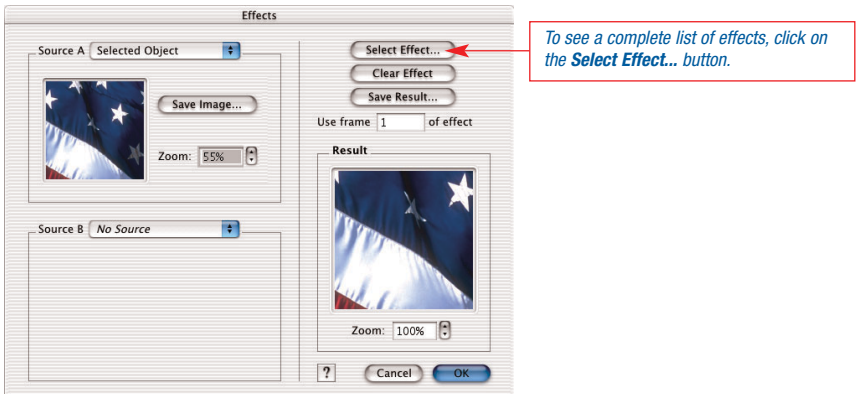
Tip 2: Did you know that you can fix the background image?

The main difference between using an image as clipart and using an image as a background image is that the background image is fixed. It can not be moved, sized or have special effects applied to it. There are 2 types of backgrounds; Images and Gradients. You can insert by using the following toolbar buttons:

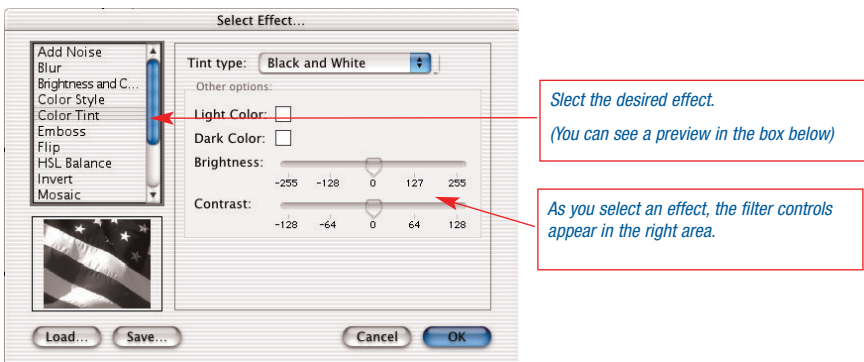


Tip 3: Did you know that you can add special effects to images?

Once you have an image inserted into your template, click once on it to highlight it and under the **Tools** pulldown menu, select **Effects...**



The following dialog will be displayed:



When you are pleased with the effect, select the **OK** button to continue.

Tip 4: Did you know you can make an image “see-thru”?

Adjusting the transparency of an image is an old trick designers use in order to make their text stand out better. To make an image transparent, use the instructions in Tip 3 to bring up **Effects** dialog. Select the **Cross Fade** effect and use the slider bar to the right to adjust the amount of transparency you want to apply to the image:

Example:



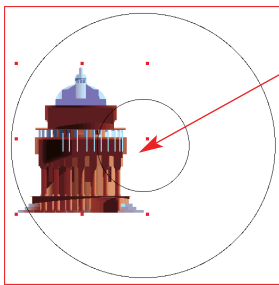
Before (No opacity)



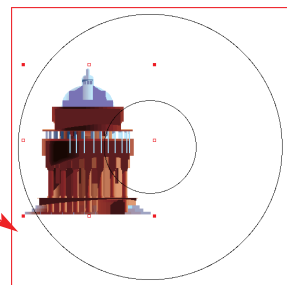
After (50% opacity)

Tip 5: Did you know that you can change the aspect ratio of any image?

If it doesn't fit correctly, force it! To adjust an image to make it fit in a space, use the control bars that are part of any selected image. First, start off by selecting an image:

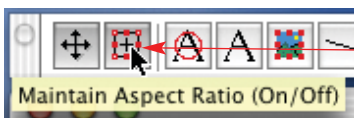


*The **SOLID RED** control handles allow you to resize, stretch and squish the image.*



*The **SOLID RED** and **OPEN RED** control handles allow you to resize the image without distortion.*

To maintain the image's aspect ratio (in other words, make it so that you can only resize, not stretch or squish the image), use the **Resize Aspect Ratio** icon on the **Tools** toolbar:



Click this icon to fix or release the aspect ratio of the selected image.

Grab a control and move it left, right or up, down and adjust the image until it fits in the space you want.

Tip 6: Did you know you can add a Barcode to your label?

Adding a barcode to the back of your Jewel Case can be easily accomplished by using the **Barcode** icon located on the **Tools** toolbar:



When you select the Barcode tool, you'll see the following dialog:

The dialog box is titled "Barcode" and contains the following elements:

- Barcode:** EAN-13 (dropdown)
- Variation:** Size A (dropdown)
- Text:** 1212345123451-12345 (text field)
- Show Example:** (checkbox)
- Margin:** Horz: 2, Vert: 2 (spinners)
- Size:** 34 (spinners)
- Buttons:** Cancel, OK

Annotations in red boxes:

- Points to the "Text" field: *Enter barcode text here.*
- Points to the "OK" button: *Clicking OK will insert the barcode onto your label. It will be movable but not resizable.*
- Points to the "Show Example" preview: *The barcode is created as you type text here.*

Footnote: European Article Number with 13 digits. Also known as UCC/EAN-13.

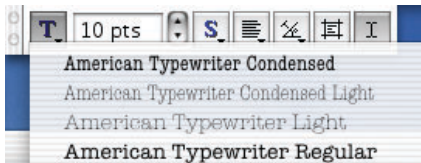
How the Text Tools work:

Round labels require round text but there is more to Click'N Design 3d than you know:

Tip 1: Did you know that one text box can have different fonts, sizes, colors, etc...?

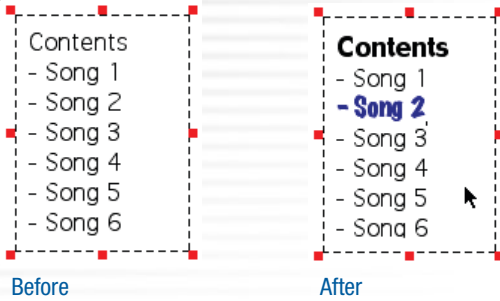
Want to bold one word in a paragraph or change the color to red so that it stands out? These controls and more are available to you. First create a text box and type in some text. Then, using your mouse, click and drag, highlighting only the text you want to change (*if you're using an existing text box, you may have to double click inside the box in order to be able to highlight a specific line of text*).

Now, notice the Text toolbar:



From here click on the **Bold** icon and then click on the **Size Control** 12 pts .

Notice how only the text you highlighted in your text box changes?:



Other effects you can apply to your text are:

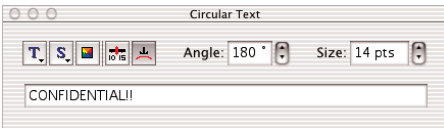
- Italics & Underline text
- Justify text left, center or right
- Rotate your text up, down or at a specified degree
- Adjust margins in a text box
- Toggle between editing the text and moving the text box
- Fill the text box background with a color
- Insert characters (ie. © or ®, etc...)

Tip 2: Did you know you can create round text?

It's so easy! Click on the Circular Text tool located on the **Tools** toolbar.



You will see the following dialog appear:

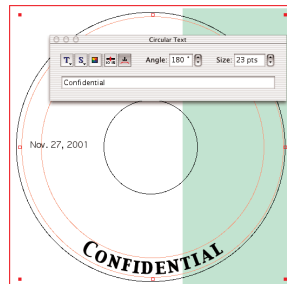


Now, start typing in the text you want. From this dialog you can change the angle of the text:

- 0 = top of label
- 90 = right side of label
- 180 = bottom of label
- 270 = left side of label

You can also change the text font, size, color and more... When you're finished, click anywhere inside your label to close the Circular Text dialog (to return to the dialog simply click on the circular text itself).

Once entered, you can adjust where your circular text is located on your label by clicking on the outline and dragging it in or out:

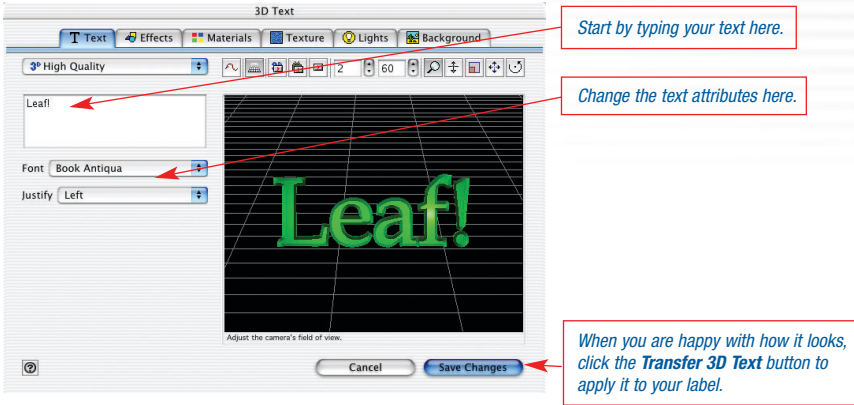


Tip 3: Did you know you can create 3D text?

The ability to add 3D text to your label is one of the most powerful features of Click'N Design 3d. To add 3D text to your label, start by clicking on the **3D Text** icon located on the **Tools** toolbar.



You should now be looking at the 3D Text dialog:



Using the 3D View Controls:

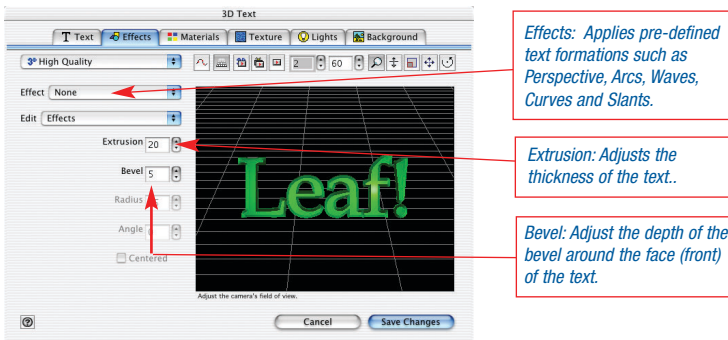
Tools (from left to right):



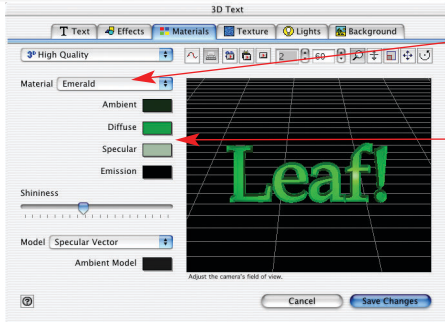
- **Zoom:** Makes the text larger or smaller depending upon how much text there is to view. Zoom adjusts the field of view. To zoom in on the text without affecting the field of view, use the Dolly control.
- **Dolly:** Moves the text in closer or farther depending upon the movement of the mouse cursor.
- **Scale:** Makes the text larger or smaller. Can also use to stretch and squish text.
- **Move:** Moves the text around the screen.
- **Rotate:** Rotates the text around its axis adjusting the 3D view.

To use each of these controls, click inside the 3D text area with your mouse cursor and while holding down the mouse button move the mouse up or down, left or right. In some instances, releasing the mouse button and repeating the action is necessary to achieve the desired effect.

Effects Tab:



Material Tab:

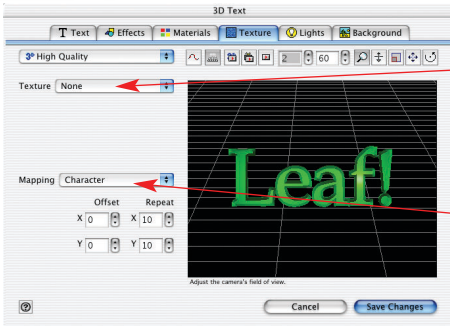


Materials: Applies pre-defined material types such as Plastic, Rubber, Brass, Silver, Chrome and more...

Adjust the lighting of your text

- Ambient: Background lighting (best when dark).
- Diffuse: Most important setting. Sets color tone.
- Specular: Sets highlight color.
- Emission: Adds color to other colors chosen.
- Shininess: Makes text shiny or dull looking.

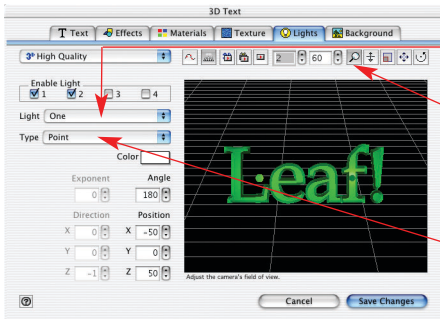
Texture Tab:



Texture: You can map an image to your text or you can add a gradient color.

Mapping: When you add a Texture, you can control how it looks applied to your text by manipulating mapping type and coordinates.

Light Tab:



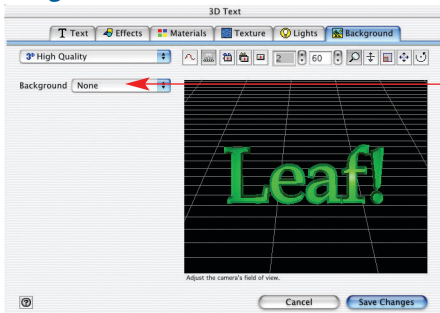
1. Select how many lights you want (the longer the text, the more lights you want).

2. Once you've selected your lighting, use the Zoom and Move button to adjust your display in order to see and move your lights

Point light is a focused light like a spot light.

Directional light is a broad light much like light from a light bulb.

Background Tab:



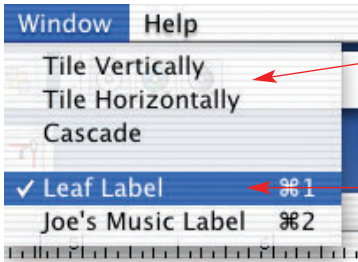
Add an image or gradient background to your 3D text.

How the Display Tools work:

Want to see the whole label (not just the round part) or need a grid and centering tools? Want to lock an object? Here's some tips for navigating through the Click'N Design 3d display:

Tip 1: Did you know you can have multiple labels open at the same time?

The ability to have multiple labels open at the same time allows you to work on CD, Jewel Case and other labels at the same time. This makes it incredibly convenient when copying or pasting artwork and other similar elements. To navigate through all open documents, use the tools located under the **Window** pull-down menu.

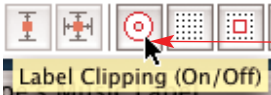


Clicking on any of the selections allows you to see all the open labels.

To bring a specific label to the front, click on the desired label name listed at the bottom of the pull-down menu (this list represents all the open labels).

Tip 2: Did you know you can see beyond the boundaries of a CD label?

In order to give you a true representation of what your CD label will look like when printed, the template crops the unused areas of your graphics. If you would like to see these areas, click on the Crop tool located on the **Position** toolbar. Click the icon again to return back to the cropped view.



Click once to see graphics beyond the label, click again to clip.

Label with clipping ON



Label with clipping OFF



Tip 3: Did you know you can center any object?

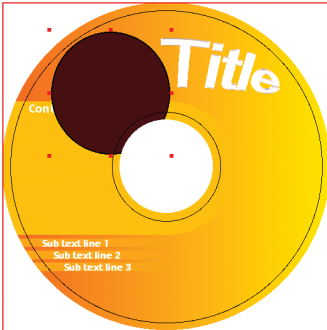
Lining up multiple objects can be very helpful in creating a good-looking design. The tools available to help with this task are located on the **Position** toolbar. To center an object, first, click on the object you wish to center and then click on the Centering icon. The object will be moved to the center of the template you are working on.



Centering tools (left to right)

- Center Horizontal
- Center Vertical
- Center both Horizontal and Vertical

Off-centered object



Using **Center on Label** icon:



Tip 4: Did you know you can lock an object in place?

Locking an object means that it can not be moved or edited. This is helpful when there are many objects on the template. To lock an object, select that object and then click on the Lock icon located on the **Position** toolbar. You can unlock the object by again clicking on the Lock icon.



Tip 5: Did you know you can move an object behind other objects?

Did your text disappear behind the image you just inserted? To view that text, click on the image so that it is highlighted and click on the **Send to Back** button on the toolbar.

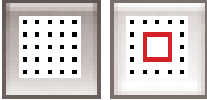


Your text should now be on top of the image. Other tools like this one are:

- Bring to Front: Brings object to the very front of the template
- Up One Level: Brings the object up one level (example: If there are 4 objects and this is the bottom object, it will be positioned between object #2 and object #3).
- Down One Level: Sends the object down one level.
- Send to Back: Sends the object to the very back of the template so that it is behind all other objects.

Tip 6: Did you know you can create and snap to a grid?

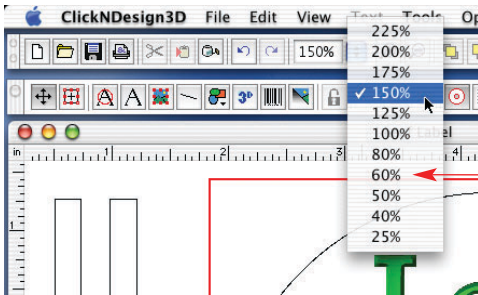
Using the Grid button on the toolbar, you will see the grid appear in your template. To snap to the grid, click on the Snap icon on the same toolbar.



To adjust and snap to the grid, click on the **Files** pulldown menu, select **Preferences** and then on the **Appearance** tab.

Tip 7: Did you know you can see the entire label sheet and not just a portion of it?

To see the entire template sheet (*most are as big as an 8.5x11 sheet of paper*), click on the zoom tool in the Display toolbar. Click on the 25% selection. You should now see the entire template which should look exactly like the paper you will be printing it to.



Zooming out to 60% or lower will give you an overall view of your template.

Technical Support

Technical Support and Product Updates

Stomp is serious about customer satisfaction. If you're having difficulty with Click'N Design 3d, please follow these steps:

- 1.** Check the Stomp website. Common problems and their solutions can be found there.
- 2.** For telephone technical support, please call 949-515-5299. Before calling, please have the following:
 - Your Macintosh configuration (*CPU, recorder make & model, OS version*).
 - Description of the problem you are encountering.

Note: *When calling for support please be at the Macintosh where the software is installed so the technical support technician can assist you in resolving the problem.*

***Create and Print Amazing CD Labels
From Your Desktop***



www.stompinc.com